

Health Equity – A Look at the District of Columbia

LaQuandra S. Nesbitt, MD, MPH

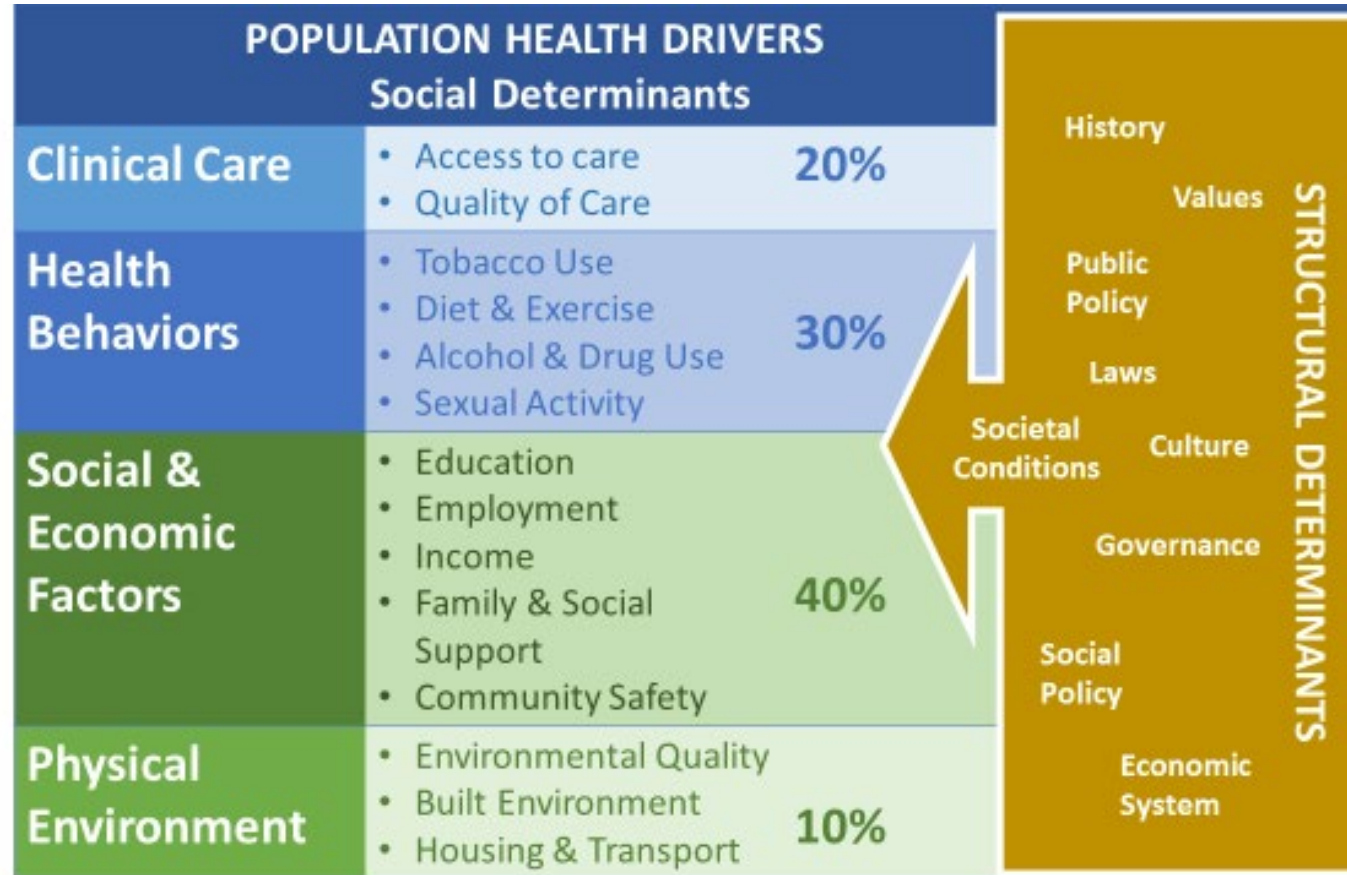
February 22, 2022

DC Health Equity Report 2018: Frameworks

POPULATION HEALTH DRIVERS: SOCIAL & STRUCTURAL DETERMINANTS

**The
County
Health
Rankings
Model**

CAUSES



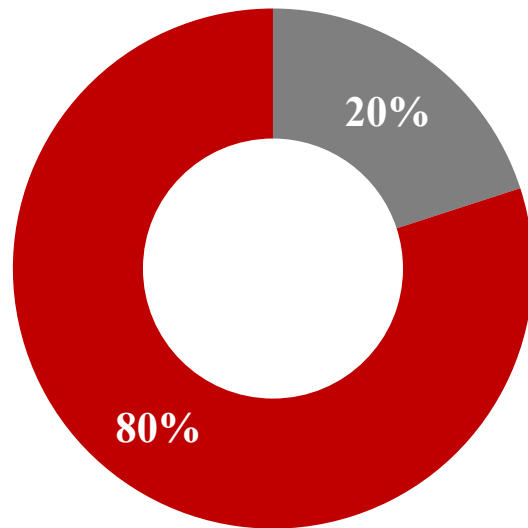
**The
World
Health
Organization
(CSDH)
Model**

**DISTRI-
BUTION**

DC Health Equity Report 2018: Frameworks

SOCIAL & STRUCTURAL DETERMINANTS OF HEALTH

Determinants of Health



- Clinical Care
- Non-Clinical Determinants

Health Equity 101: Key Insights

- ✓ Health is more than healthcare
- ✓ Health Inequities are neither natural nor inevitable
- ✓ Your zip-code may be more important than your genetic code for health
- ✓ The choices we make are shaped by the choices we have
- ✓ Structural Racism acts as a force in the distribution of opportunities for health
- ✓ All policy is health policy

DC HER 2018: Differential Opportunities for Health in DC



Nine (9) Key Drivers & Interrelated Pathways

- ✓ Life expectancy at birth varies by 21 years across the 51-statistical neighborhoods
- ✓ More opportunities for health (positive outcomes) are concentrated in the neighborhoods with the longest life expectancy; and
 - The opposite is true for neighborhoods with the shortest life expectancy
- ✓ Overall, it is clear – there are differential opportunities for health - - by **income, place and race**

DC COVID-19 Statistical Neighborhood Vulnerability Index

Health Planning Neighborhood	Age >65 >13% of residents	Public Insurance >42% of adults	Uninsured >5% of adults	Income < 200% Poverty >25% HH	Essential Workers >11% of employed residents	Unemployment Rate >8%	SNAP or Public Assistance >17% of HH	Residential Segregation >80% AA	Limited English Proficiency >2.0% of HH	Crowding >3.1% of HH	Vulnerability Score	COVID-19 Cumulative Incidence Rate per 10,000	Racial & Ethnic Minority Population
FORT DUPONT	12.8%	66.6%	5.9%	56.6%	14.3%	15.6%	17.1%	96.1%	0.8%	5.9%	8	675.6	99.5%
LINCOLN HEIGHTS	14.5%	61.2%	3.8%	43.4%	12.8%	16.1%	25.4%	95.9%	0.5%	3.9%	8	839.2	99.4%
DOUGLASS	7.1%	64.5%	6.7%	53.9%	15.2%	15.2%	13.2%	91.7%	0.6%	4.7%	7	755.7	98.6%
LAMOND RIGGS	19.2%	43.7%	6.1%	25.2%	11.5%	12.3%	1.2%	73.1%	3.8%	2.0%	7	727.7	91.1%
BELLE VUE	8.0%	64.7%	4.0%	54.9%	16.1%	18.5%	19.8%	95.9%	0.5%	4.9%	7	635.1	98.7%
CONGRESS HEIGHTS/HIPLEY	11.2%	67.3%	3.1%	53.9%	14.7%	22.9%	18.8%	93.7%	0.4%	4.1%	7	917.1	98.3%
HISTORIC ANACOSTIA	6.5%	69.7%	2.3%	64.8%	12.4%	15.1%	19.3%	95.0%	0.6%	4.8%	7	815.1	98.4%
TWINING	16.4%	58.6%	3.2%	37.1%	15.8%	13.8%	15.0%	89.4%	0.6%	3.7%	7	697.5	95.6%
BRIGHTWOOD	12.2%	47.5%	7.3%	39.0%	14.6%	5.5%	22.6%	58.5%	9.2%	8.2%	7	867.5	85.9%
NAYLOR/HILL CREST	13.8%	62.5%	4.4%	52.5%	9.9%	14.8%	22.4%	91.4%	0.0%	2.1%	6	708.3	96.5%
MARSHALL HEIGHTS	9.9%	61.6%	3.4%	51.1%	14.7%	16.2%	8.7%	95.0%	1.0%	4.1%	6	721.5	98.7%
TRINIDAD	9.2%	50.6%	9.7%	43.1%	15.7%	11.3%	8.0%	72.8%	1.9%	4.5%	6	760.1	84.0%
BRENTWOOD	13.3%	45.0%	4.6%	33.1%	12.5%	11.1%	5.7%	68.2%	2.1%	2.2%	6	760.9	77.9%
WASHINGTON HIGHLANDS	12.2%	67.2%	7.5%	56.4%	10.9%	25.3%	3.2%	96.8%	1.0%	6.3%	6	751.6	98.9%
MICHIGAN PARK	14.6%	33.7%	5.3%	25.2%	15.2%	6.9%	6.0%	55.8%	4.8%	5.2%	6	717.8	78.1%
16th ST HEIGHTS	13.7%	38.6%	5.7%	25.5%	13.7%	5.2%	9.8%	44.2%	10.1%	6.5%	6	824.1	77.2%
EA STLAND GARDENS	9.4%	65.1%	4.3%	54.6%	13.6%	20.1%	12.3%	93.3%	0.3%	1.3%	5	813.6	98.2%
SAINT ELIZABETHS	11.4%	67.7%	3.9%	60.4%	12.1%	24.9%	7.8%	92.2%	0.7%	2.5%	5	851.6	96.5%
FORT LINCOLN GATEWAY	23.6%	42.7%	2.1%	28.7%	8.5%	8.4%	14.1%	83.7%	0.6%	1.1%	5	949.1	92.6%
EDGEWOOD	9.2%	34.3%	9.9%	34.3%	12.1%	8.9%	7.4%	57.3%	2.7%	1.8%	5	922.4	72.1%
SOUTH COLUMBIA HEIGHTS	6.6%	34.6%	5.7%	35.5%	11.3%	4.2%	23.3%	33.1%	3.3%	2.8%	5	683.1	63.0%

is: On

Vulnerability Score
(Cumulative 0-8)

COVID -19 Cumulative Incidence
(Rate per 10,000)

Racial & Ethnic Minority (% Population)

DC COVID-19 Vulnerability Index Criteria

- Age over 65 > 13% Residents
- Public Insurance > 42% of Adults
- Uninsured > 5% Adults
- Income < 200% Poverty > 25% HH
- Essential Worker > 11% Emp. Res.
- Unemployment > 8%
- SNAP/Public Assistance >17% HH
- Residential Segregation > 80% AA
- Limited English Proficiency > 2.0%
- Crowding > 3.1% HH

DC COVID-19 Statistical Neighborhood Vulnerability Index (Part 2)

SOUTH COLUMBIA HEIGHTS	6.6%	34.6%	5.7%	35.5%	11.3%	4.2%	23.3%	33.1%	3.3%	2.8%	5	683.1	63.0%
SHEPHERD PARK	17.5%	34.6%	2.8%	10.1%	12.5%	4.9%	20.4%	55.7%	4.7%	6.5%	5	575.0	77.6%
COLUMBIA HEIGHTS	7.0%	34.3%	8.1%	27.5%	14.0%	6.8%	16.4%	33.2%	10.1%	7.2%	5	819.4	68.1%
BRIGHTWOOD PARK	15.7%	42.0%	7.5%	23.5%	15.2%	7.8%	5.0%	66.9%	5.6%	3.1%	4	957.9	89.4%
MOUNT PLEASANT	6.7%	18.2%	7.1%	25.0%	10.8%	3.6%	17.5%	17.5%	4.3%	7.4%	4	564.0	51.4%
STADIUM ARMORY	3.3%	7.3%	11.1%	4.8%	0.2%	41.5%	0.4%	84.0%	1.1%	0.0%	3	821.4	92.9%
GEORGETOWNEAST	16.1%	16.9%	1.8%	13.6%	6.1%	2.2%	33.7%	4.2%	2.8%	2.0%	3	479.4	24.6%
PETWORTH	11.7%	33.2%	6.5%	21.3%	14.0%	7.2%	6.2%	52.8%	3.9%	2.3%	3	836.0	75.2%
CHINATOWN	9.7%	28.5%	3.2%	27.0%	9.7%	5.9%	15.1%	32.3%	3.1%	3.8%	3	755.3	55.5%
LOGAN CIRCLE/SHAW	7.1%	21.7%	2.7%	20.9%	8.3%	3.0%	26.2%	18.3%	2.3%	5.2%	3	516.8	44.0%
CHEVY CHASE	21.1%	22.6%	2.4%	10.0%	5.0%	3.9%	18.0%	8.4%	1.9%	1.8%	2	339.0	35.4%
KENT/PALISADES	16.2%	18.7%	2.3%	10.6%	6.6%	5.9%	42.3%	7.6%	1.0%	0.8%	2	272.9	30.7%
WOODRIDGE	18.8%	31.6%	2.9%	12.9%	10.4%	7.1%	25.8%	75.8%	0.9%	2.3%	2	690.4	83.2%
TENLEYTOWN	17.2%	19.1%	1.2%	7.6%	4.0%	2.9%	36.4%	5.2%	0.6%	1.0%	2	303.3	24.5%
BLOOMINGDALE	10.3%	26.4%	2.3%	17.7%	10.1%	3.9%	17.2%	49.0%	0.8%	1.0%	2	548.7	62.8%
FOREST HILLS	18.2%	20.2%	4.4%	12.1%	6.7%	4.1%	5.2%	10.3%	2.9%	2.5%	2	279.0	29.1%
ADAMS MORGAN	9.3%	16.6%	3.1%	10.8%	5.7%	2.9%	24.3%	9.0%	2.0%	2.2%	1	391.5	29.7%
BARNABY WOODS	22.7%	19.9%	1.0%	5.9%	2.7%	5.4%	12.5%	5.8%	0.3%	0.0%	1	284.5	19.3%
GEORGETOWN	10.4%	12.7%	2.1%	10.4%	5.6%	3.6%	17.2%	7.8%	0.4%	0.7%	1	488.2	33.5%
HILL EAST	7.6%	28.0%	2.4%	24.1%	4.7%	6.7%	21.6%	37.6%	0.1%	1.2%	1	538.9	48.5%
NAVAL STATION & AIRFORCE	0.7%	5.1%	0.0%	17.8%	4.8%	5.1%	29.5%	28.0%	0.7%	2.0%	1	172.8	48.8%
SWWATERFRONT	13.3%	29.6%	3.3%	20.3%	9.0%	6.3%	15.8%	36.8%	0.2%	1.6%	1	872.4	50.1%
U STREET/PLEASANT	6.8%	17.2%	3.0%	16.9%	8.2%	4.5%	35.7%	43.6%	1.7%	2.8%	1	528.1	58.7%
CATHEDRAL HEIGHTS	14.1%	18.9%	2.0%	22.9%	8.3%	4.6%	15.6%	7.5%	1.1%	2.4%	1	291.4	27.8%
DC MEDICAL CENTER	33.3%	31.4%	3.5%	22.8%	11.0%	5.4%	10.2%	51.0%	0.6%	2.3%	1	880.2	65.4%
UNION STATION	6.9%	14.7%	2.6%	15.7%	7.4%	2.4%	18.2%	23.1%	0.3%	2.0%	1	679.4	35.9%
WOODLEY PARK	18.3%	19.0%	1.3%	7.8%	5.0%	1.8%	9.2%	5.7%	0.5%	1.0%	1	308.7	26.1%
GWU	9.9%	13.2%	3.4%	19.3%	5.7%	5.0%	1.9%	8.4%	1.4%	3.4%	1	328.2	36.1%
KINGMAN PARK	10.2%	25.8%	2.0%	16.9%	8.6%	4.6%	10.3%	38.8%	0.6%	0.9%	0	504.9	49.3%
CAPITOL HILL	13.0%	16.4%	1.7%	8.7%	3.8%	3.6%	10.9%	8.6%	0.4%	0.5%	0	381.2	22.8%

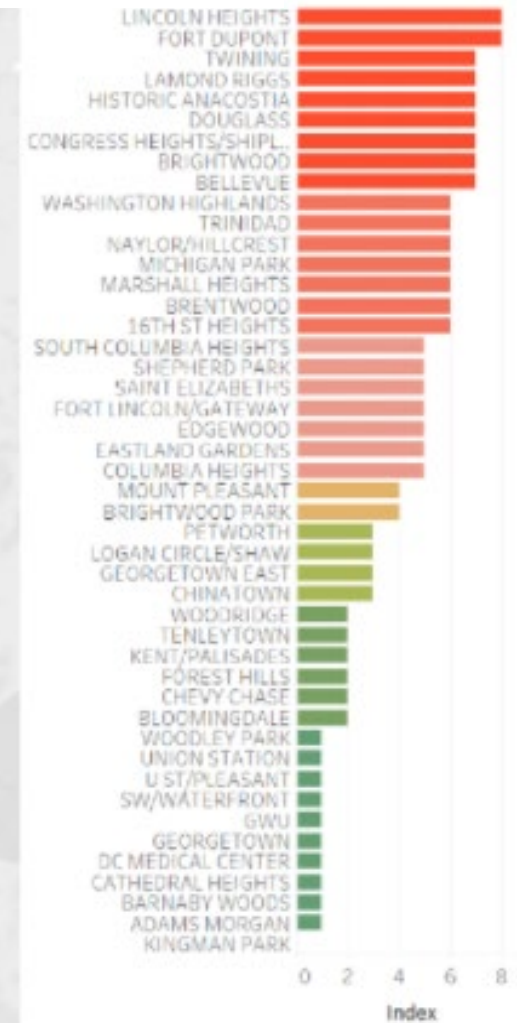
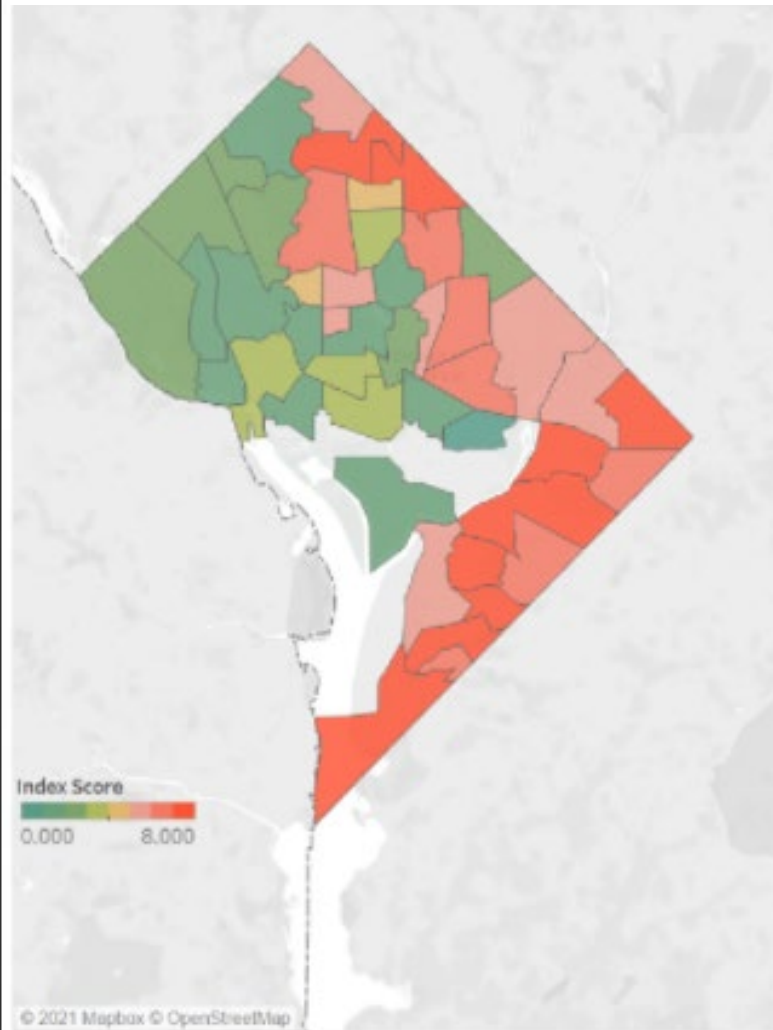
Uninsured %

SNAP/Public Assistance

Limited Eng. Prof.

DC COVID-19 Structural Vulnerability Index & Map

Wash. Planning Neighborhood	Pop. >= 15% of residents	Public Insurance > 25% of adults	Uninsured > 5% of adults	Age 65+ > 20% of Pop. (Age 75+ > 10% of Pop.)	Essential Workers > 11% of employed residents	Unemployment Rate > 10%	RAA of Public Assistance > 1% of Households	Racial/Ethnic Segregation > 80% AA	Limited English Proficiency > 2.0% of Households	Crowding > 3% of Households	Vulnerability Score	COVID-19 Cumulative Incidence Rate per 10,000	Racial/Ethnic Minority Population
FORT DUPONT	12.8%	66.6%	5.9%	56.6%	14.3%	15.6%	17.1%	96.1%	0.8%	5.9%	8	675.6	99.5%
LINCOLN HEIGHTS	14.5%	61.2%	3.8%	43.4%	12.8%	16.1%	25.4%	95.9%	0.5%	3.9%	8	839.2	99.4%
DOUGLASS	7.1%	64.5%	6.7%	53.9%	15.2%	15.2%	13.2%	91.7%	0.6%	4.7%	7	755.7	98.6%
LAMOND RIGGS	19.2%	43.7%	6.1%	25.2%	11.5%	12.3%	1.2%	73.1%	3.8%	2.0%	7	727.7	91.1%
BELLEVUE	8.0%	64.7%	4.0%	54.9%	16.1%	18.5%	19.8%	95.9%	0.5%	4.9%	7	635.1	98.7%
CONGRESS HEIGHTS/SHIPLEY	11.2%	67.3%	3.1%	53.9%	14.7%	22.9%	18.8%	93.7%	0.4%	4.1%	7	917.1	98.3%
HISTORIC ANACOSTIA	6.5%	69.7%	2.3%	64.8%	12.4%	15.1%	19.3%	95.0%	0.6%	4.8%	7	815.1	98.4%
TWINGING	16.4%	58.6%	3.2%	37.1%	15.8%	13.8%	15.0%	89.4%	0.6%	3.7%	7	697.5	95.6%
BRIGHTWOOD	12.2%	47.5%	7.3%	39.0%	14.6%	5.5%	22.6%	58.5%	9.2%	8.2%	7	867.5	85.9%
NAYLOR/HILLCREST	13.8%	62.5%	4.4%	52.5%	9.9%	14.8%	22.4%	91.4%	0.0%	2.1%	6	708.3	96.5%
MARSHALL HEIGHTS	9.9%	61.6%	3.4%	51.1%	14.7%	16.2%	8.7%	95.0%	1.0%	4.1%	6	721.5	98.7%
TRINIDAD	9.2%	50.6%	9.7%	43.1%	15.7%	11.3%	8.0%	72.8%	1.9%	4.5%	6	760.1	84.0%
BRENTWOOD	13.3%	45.0%	4.6%	33.1%	12.5%	11.1%	5.7%	68.2%	2.1%	2.2%	6	760.9	77.9%
WASHINGTON HIGHLANDS	12.2%	67.2%	7.5%	56.4%	10.9%	25.3%	3.2%	96.8%	1.0%	6.3%	6	751.6	98.9%
MICHIGAN PARK	14.6%	33.7%	5.3%	25.2%	15.2%	6.9%	6.0%	55.8%	4.8%	5.2%	6	717.8	78.1%
16th ST HEIGHTS	13.7%	38.6%	5.7%	25.5%	13.7%	5.2%	9.8%	44.2%	10.1%	6.5%	6	824.1	77.2%
EASTLAND GARDENS	9.4%	65.1%	4.3%	54.6%	13.6%	20.1%	12.3%	93.3%	0.3%	1.3%	8	813.6	98.2%
SAINT ELIZABETHS	11.4%	67.7%	3.9%	60.4%	12.1%	24.9%	7.8%	92.2%	0.7%	2.5%	8	851.6	96.5%
FORT LINCOLN/GATEWAY	23.6%	42.7%	2.1%	28.7%	8.5%	8.4%	14.1%	83.7%	0.6%	1.1%	8	949.1	92.6%
EDGEWOOD	9.2%	34.3%	9.9%	34.3%	12.1%	8.9%	7.4%	57.3%	2.7%	1.8%	8	922.4	72.1%
SOUTH COLUMBIA HEIGHTS	6.6%	34.6%	5.7%	35.5%	11.3%	4.2%	23.3%	33.1%	3.3%	2.8%	8	683.1	63.0%
SHEPHERD PARK	17.5%	34.6%	2.8%	10.1%	12.5%	4.9%	20.4%	55.7%	4.7%	6.5%	8	575.0	77.6%
COLUMBIA HEIGHTS	7.0%	34.3%	8.1%	27.5%	14.0%	6.8%	16.4%	33.2%	10.1%	7.2%	8	819.4	68.1%
BRIGHTWOOD PARK	15.7%	42.0%	7.5%	23.5%	15.2%	7.8%	5.0%	66.9%	5.6%	3.1%	4	957.9	89.4%
MOUNT PLEASANT	6.7%	18.2%	7.1%	25.0%	10.8%	3.6%	17.5%	17.5%	4.3%	7.4%	4	564.0	51.4%
STADIUM ARMORY	3.3%	7.3%	11.1%	4.8%	0.2%	41.5%	0.4%	84.0%	1.1%	0.0%	3	821.4	92.9%
GEORGETOWN EAST	16.1%	16.9%	1.8%	13.6%	6.1%	2.2%	33.7%	4.2%	2.8%	2.0%	3	479.4	24.6%
PETWORTH	11.7%	33.2%	6.5%	21.3%	14.0%	7.2%	6.2%	52.8%	3.9%	2.3%	3	836.0	75.2%
CHINATOWN	9.7%	28.5%	3.2%	27.0%	9.7%	5.9%	15.1%	32.3%	3.1%	3.8%	3	755.3	55.5%
LOGAN CIRCLE/SHAW	7.1%	21.7%	2.7%	20.9%	8.3%	3.0%	26.2%	18.3%	2.3%	5.2%	3	516.8	44.0%
CHEVY CHASE	21.1%	22.6%	2.4%	10.0%	5.0%	3.9%	18.0%	8.4%	1.9%	1.8%	2	339.0	35.4%
KENT/PALISADES	16.2%	18.7%	2.3%	10.6%	6.6%	5.9%	42.3%	7.6%	1.0%	0.8%	2	272.9	30.7%
WOODRIDGE	18.8%	31.6%	2.9%	12.9%	10.4%	7.1%	25.8%	75.8%	0.9%	2.3%	2	690.4	83.2%
TENLEYTOWN	17.2%	19.1%	1.2%	7.6%	4.0%	2.9%	36.4%	5.2%	0.6%	1.0%	2	303.3	24.5%
BLOOMINGDALE	10.3%	26.4%	2.3%	17.7%	10.1%	3.9%	17.2%	49.0%	0.8%	1.0%	2	548.7	62.8%
FOREST HILLS	18.2%	20.2%	4.4%	12.1%	6.7%	4.1%	5.2%	10.3%	2.9%	2.5%	2	279.0	29.1%
ADAMS MORGAN	9.3%	16.6%	3.1%	10.8%	5.7%	2.9%	24.3%	9.0%	2.0%	2.2%	1	391.5	29.7%
BARNABY WOODS	22.7%	19.9%	1.0%	5.9%	2.7%	5.4%	12.5%	5.8%	0.3%	0.0%	1	284.5	19.3%
GEORGETOWN	10.4%	12.7%	2.1%	10.4%	5.6%	3.6%	17.2%	7.8%	0.4%	0.7%	1	488.2	33.5%
HILL EAST	7.6%	28.0%	2.4%	24.1%	4.7%	6.7%	21.6%	37.6%	0.1%	1.2%	1	538.9	48.5%
NAVAL STATION & AIR FORCE	0.7%	5.1%	0.0%	17.8%	4.8%	5.1%	29.5%	28.0%	0.7%	2.0%	1	172.8	48.8%
SWWATERFRONT	13.3%	29.6%	3.3%	20.3%	9.0%	6.3%	15.8%	36.8%	0.2%	1.6%	1	872.4	50.1%
U ST/PLEASANT	6.8%	17.2%	3.0%	16.9%	8.2%	4.5%	35.7%	43.6%	1.7%	2.8%	1	528.1	58.7%
CATHEDRAL HEIGHTS	14.1%	18.9%	2.0%	22.9%	8.3%	4.6%	15.6%	7.5%	1.1%	2.4%	1	291.4	27.8%
DC MEDICAL CENTER	33.3%	31.4%	3.5%	22.8%	11.0%	5.4%	10.2%	51.0%	0.6%	2.3%	1	880.2	65.4%
UNION STATION	6.9%	14.7%	2.6%	15.7%	7.4%	2.4%	18.2%	23.1%	0.3%	2.0%	1	679.4	35.9%
WOODLEY PARK	18.3%	19.0%	1.3%	7.8%	5.0%	1.8%	9.2%	5.7%	0.5%	1.0%	1	308.7	26.1%
GWU	9.9%	13.2%	3.4%	19.3%	5.7%	5.0%	1.9%	8.4%	1.4%	3.4%	1	328.2	36.1%
KINGMAN PARK	10.2%	25.8%	2.0%	16.9%	8.6%	4.6%	10.3%	38.8%	0.6%	0.9%	0	504.9	49.3%
CAPITOL HILL	13.0%	16.4%	1.7%	8.7%	3.8%	3.6%	10.9%	8.6%	0.4%	0.5%	0	381.2	22.8%



Looking Ahead: Post – Pandemic Planning

Our Collective Actions: MUST Be Intentional

Post Pandemic 3-Legged Equity Stool

In order to eliminate disparities in health outcomes, our collective actions must be intentional in three key areas:



Social & Structural Determinants of Health

Access to Quality HealthCare

Structural & Institutional Racism



Post-Pandemic Recovery: Access to Quality HealthCare

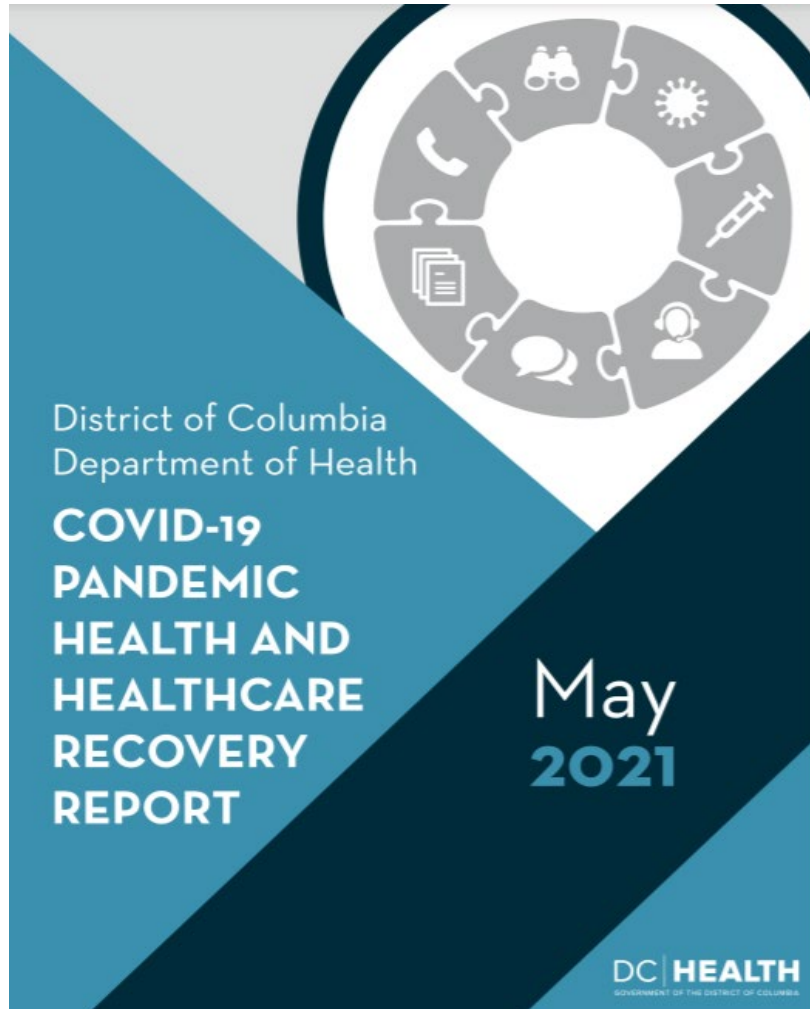
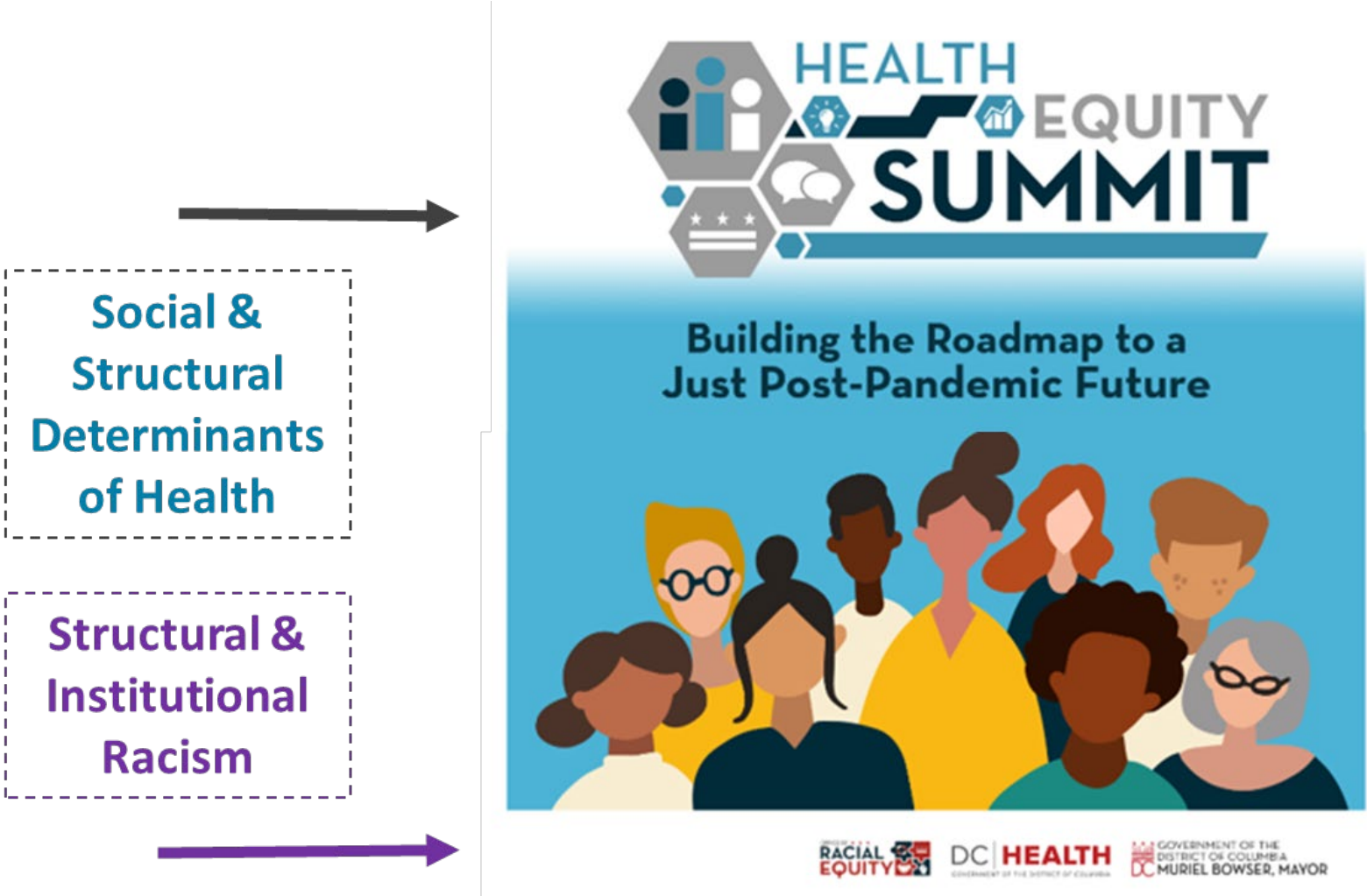


Figure 1. Framework for Addressing Post-Pandemic Health Needs


Collective Actions for Change: DC Health Equity Summit 2021




DC | HEALTH

GOVERNMENT OF THE DISTRICT OF COLUMBIA

899 North Capitol Street NE, 5th Fl, Washington, DC 20002

 dchealth.dc.gov

 [@_DCHealth](https://twitter.com/_DCHealth)

 [dchealth](https://www.instagram.com/dchealth)

 [DC Health](https://www.facebook.com/DCHealth)